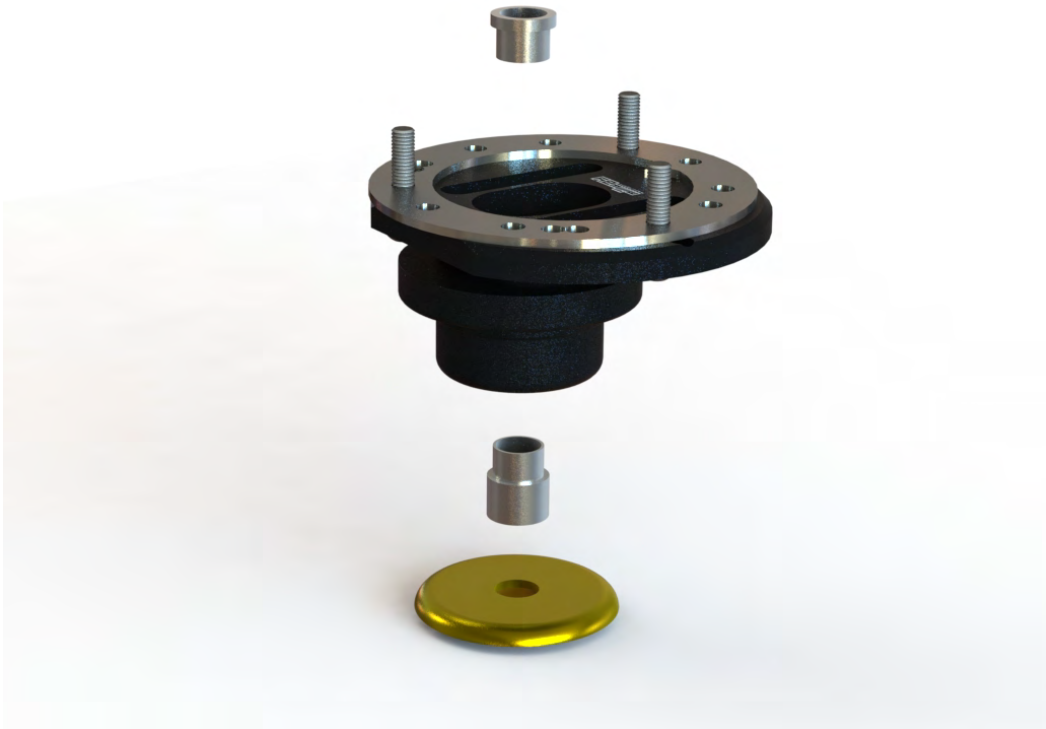


## Camber plates BMW M3E46

Art.nr: 90352

Parts included:	
Camber plates	2pcs
Sleeve 4 mm	2pcs
Sleeve 15 mm	2pcs



Remove the original spring plate and mount it on the bearing housing. Use the large OEM washer and the spacers as illustrated.

The uniballs should NEVER be lubricated. If you do so, they will be destroyed because of the PTFE layer between the outer shell and ball.