



Instructions how to adjust Camber and Caster on E36, E8x and E9x.



www.millway.se

support@millway.se

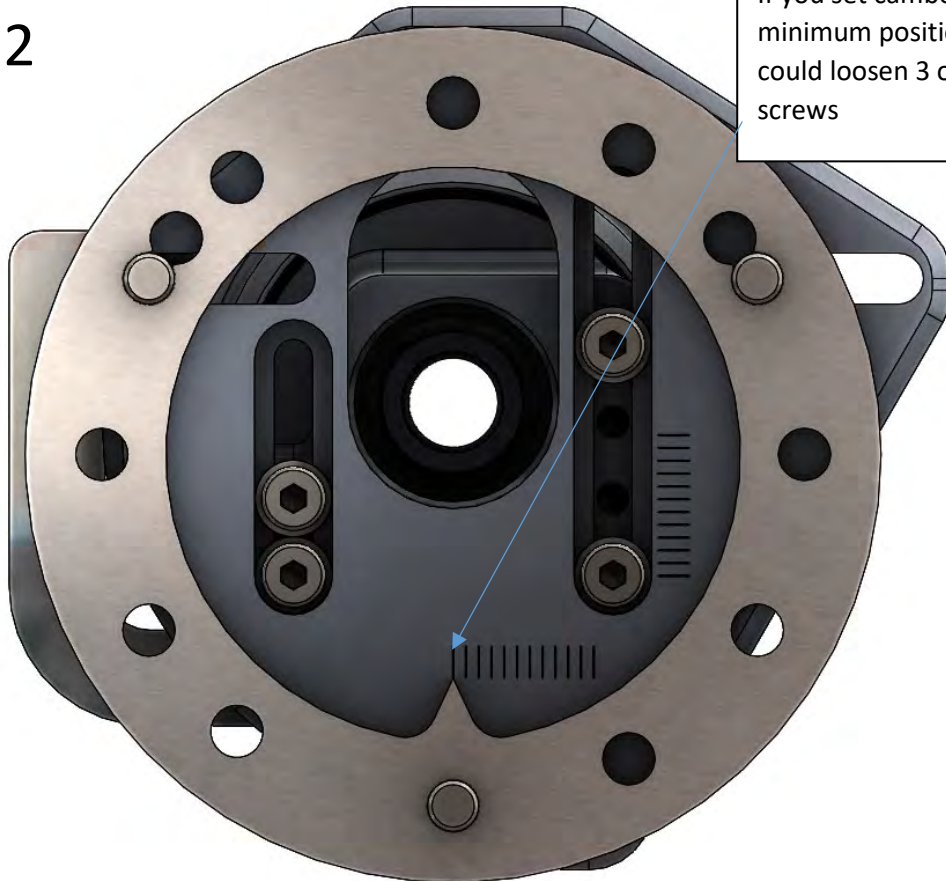
Phone: +46 72 30 80 700

1



If you have maximum
camber You could only
loosen two caster screws

2



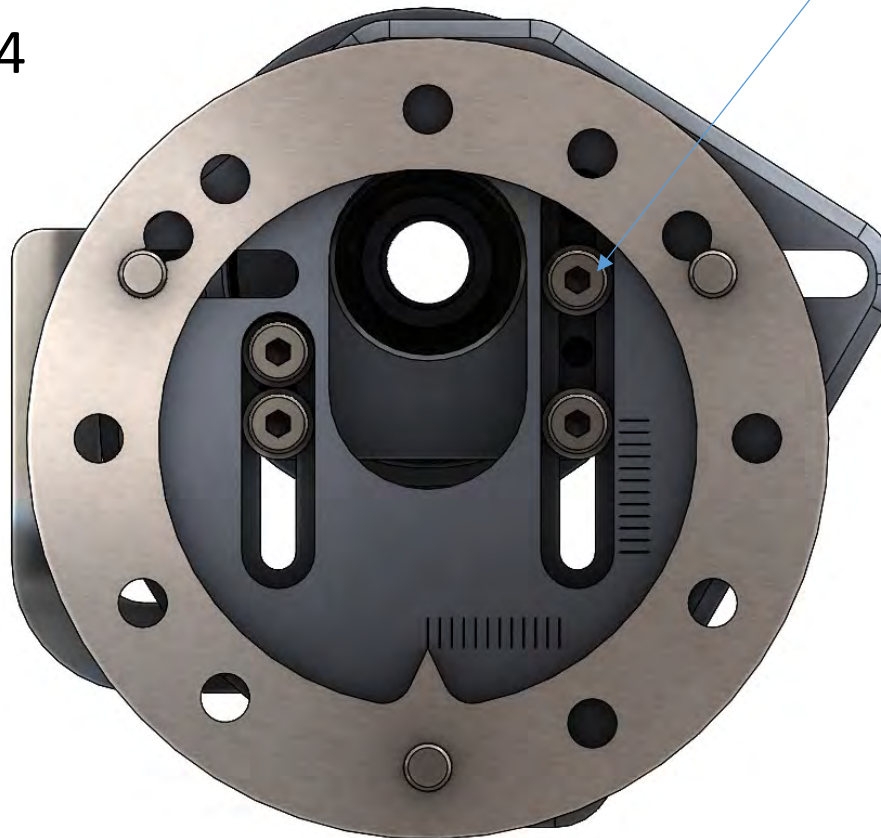
If you set camber in
minimum position you
could loosen 3 or 4 caster
screws

3



If you need maximum caster you must move screw one step. See picture 4.

4



Move screw to this hole

To perform a wheel alignment, you need to adjust all angles in correct order.

1. Caster
2. Camber
3. Toe

Begin with caster and set it equal on both sides. E36 maximum position, E8x and E9x on minimum position for OEM caster. For In order to access and tighten the screws. Follow directions in pictures above. Tighten temporarily.

With camber in a likely position. Measure caster and camber with the car level on floor. With help of the measured values, increase or decrease caster to desired values. *Adjustment must be done with car slightly lifted to take the weight of the wheels. Tighten all 4 caster screws to recommended torque. (Max 11 Nm)

Now increase camber to desired angle. One mark is 0,2 degrees. Tighten screws. (Max 20 Nm) Put the car level on floor and measure caster and camber again. Repeat steps above until the values are correct.

Finally adjust toe-angles to correct values with the car level on floor. Never adjust camber angles after toe is set.

If you have any questions or need help with alignment. Please call us at: +46 72 30 80 700 or e-mail: support@millway.se

M6 screws for caster Max 11 Nm

M8 Nuts for camber Max 20Nm

*Most modern alignment machines have functions to measure caster and camber with the car lifted. This will speed up the process but is not a requirement.

Partnumber: 10351-2
Only use on M3E9x / 1ME82

E8x/E9x use damper nut directly
against bearing. Do not use any
washer or sleeve.



M3E9x / 1ME82 use 10351-1

E36 and E8x/E9x non M
Use 10086 for flat damper
Use 10353 for conical damper

Illustration shows Camber plates M3E9x
and 1M E82. It may look different for
E36, E8x and E9x.